

OWNERS CERTIFICATION & DEDICATION

STATE OF KANSAS )  
 COUNTY OF MCPHERSON ) SS

This is to certify that the undersigned owner of the land described in the Surveyors Certificate, have caused the same to be surveyed and subdivided on the accompanying plat into lots, blocks, streets and other public ways under the name of COUNTRY ACRES; that all highways, streets, alleys, easements as denoted on the plat are hereby dedicated to and for the use of the public for the purpose of constructing, operating, maintaining and repairing public improvements; and further that the land contained herein is held and shall be conveyed subject to any applicable restrictions, reservations, and covenants now on file or hereinafter filed in the Office of the Register of Deeds of McPherson County, Kansas.

Date Signed 5-24-78

Owners Signature William R. Bager

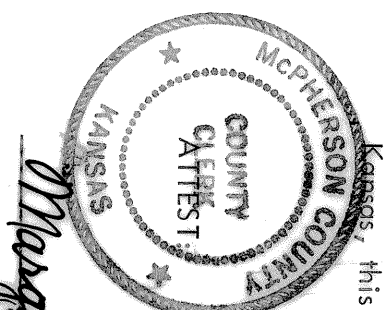
NOTARY CERTIFICATE

STATE OF KANSAS )  
 COUNTY OF MCPHERSON ) SS

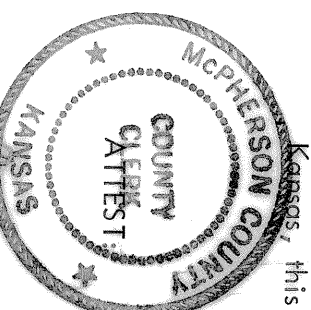
The foregoing instrument was acknowledged before me this 9th day of May, 1978, by William R. Bager a single man (SEAL) Paula Barbara Bager Notary Public

My commission expires: January 16, 1981

This plat approved and all dedications shown hereon, if any, accepted by the Board of County Commissioners of McPherson County, Kansas, this 26th day of June, 1978.  
Paul W. Coffey Chairman  
Clayton Lewis Commissioner  
Abel Baker Commissioner  
Margaret Bager County Clerk  
 County Clerk



PLANNING BOARD CERTIFICATE  
 STATE OF KANSAS )  
 COUNTY OF MCPHERSON ) SS  
 This plat of COUNTRY ACRES has been approved by the Planning Board of McPherson County, Kansas.  
 Dated this 9th day of June, 1978.  
William R. Bager, Secretary  
Abel Baker, Chairman



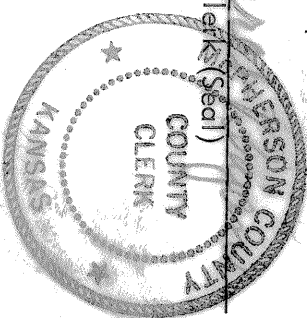
COUNTY CLERK CERTIFICATE

STATE OF KANSAS )  
 COUNTY OF MCPHERSON ) SS

I, the undersigned County Clerk of McPherson County, Kansas, within my respective jurisdiction, do hereby certify that at the date of this certificate, all due and owing taxes and special assessments of any kind assessed against the land included in this plat have been paid.

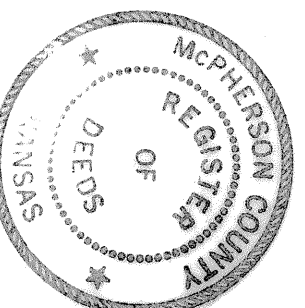
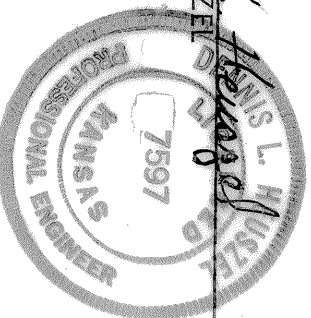
Date signed June 16, 1978

Margaret Bager County Clerk (Seal)

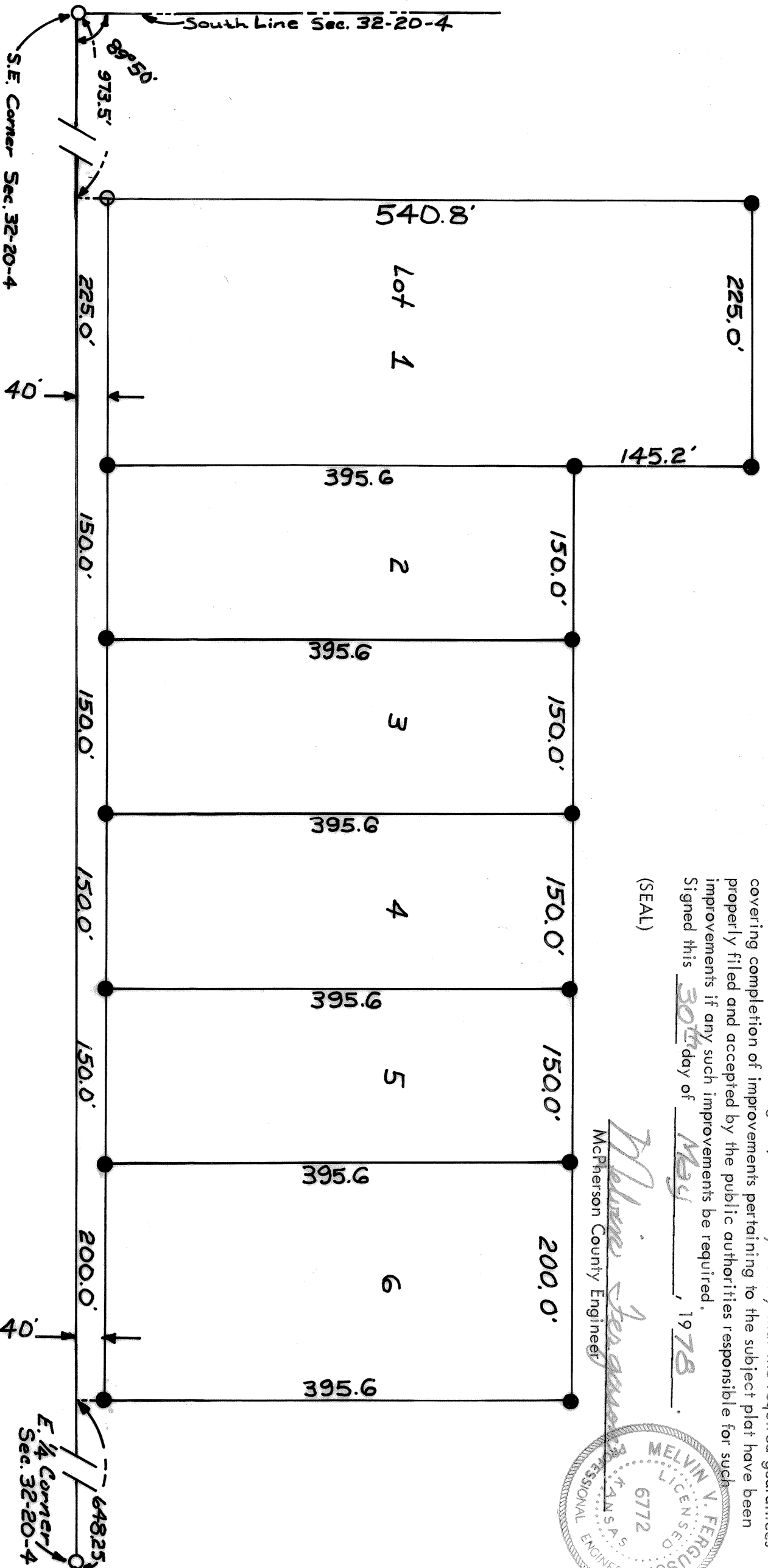
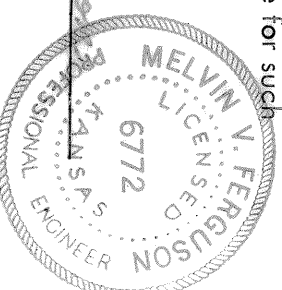


REGISTER OF DEEDS CERTIFICATE  
 STATE OF KANSAS )  
 COUNTY OF MCPHERSON ) SS

This is to certify that this instrument was filed for record in the Register of Deeds Office, at 1:15 a.m. -p.m., on the 7 day of July, 1978. Plat A # 45  
Paula Barbara Bager, Register of Deeds  
 Deputy # 2000



CERTIFICATE AS TO COUNTY PUBLIC IMPROVEMENTS  
 I, the undersigned, do hereby certify that the required guarantees covering completion of improvements pertaining to the subject plat have been properly filed and accepted by the public authorities responsible for such improvements if any such improvements be required.  
 Signed this 30th day of May, 1978.  
William R. Bager McPherson County Engineer



SCALE 1" = 100'

LEGEND  
 O Iron Pin Found  
 ● Iron Pin Set

GREAT PLAINS  
 ENGINEERS & SURVEYORS  
 McPherson, Kansas

PROJ. MC-7812  
 DATE 5-1-1978  
 SHEET 1 OF 1